



#	Date	Description
---	------	-------------

CARES Campus Intake Building
Washoe County
1800 Threlkel Street, Reno, NV

drawing title
INTAKE BUILDING ELEVATIONS
job number
21011.30
date
10 AUGUST 2022

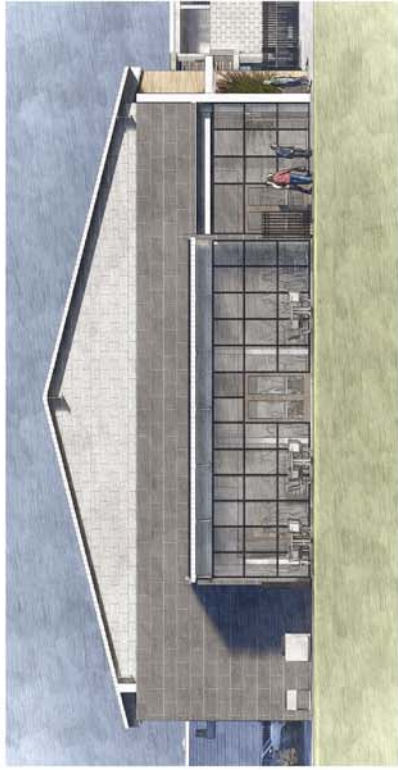
drawing number
CUP-1



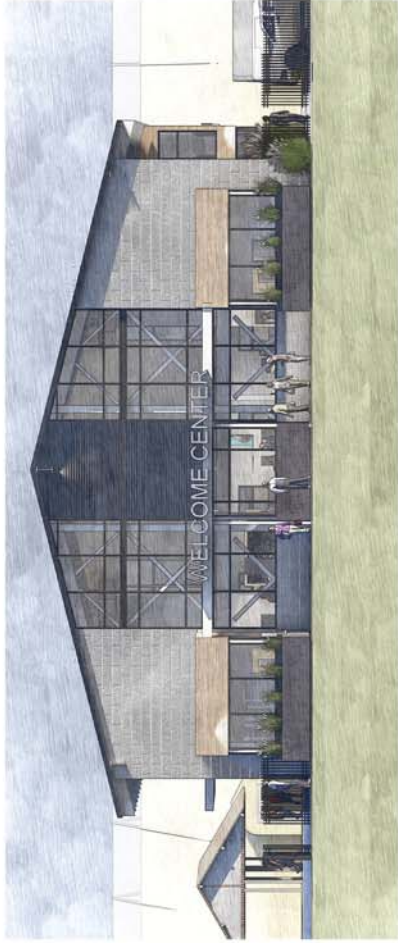
4 South Elevation
1/8" = 1'-0"



3 North Elevation
1/8" = 1'-0"



2 East Elevation
1/8" = 1'-0"



1 West Elevation
1/8" = 1'-0"



Revision Schedule	
#	Description

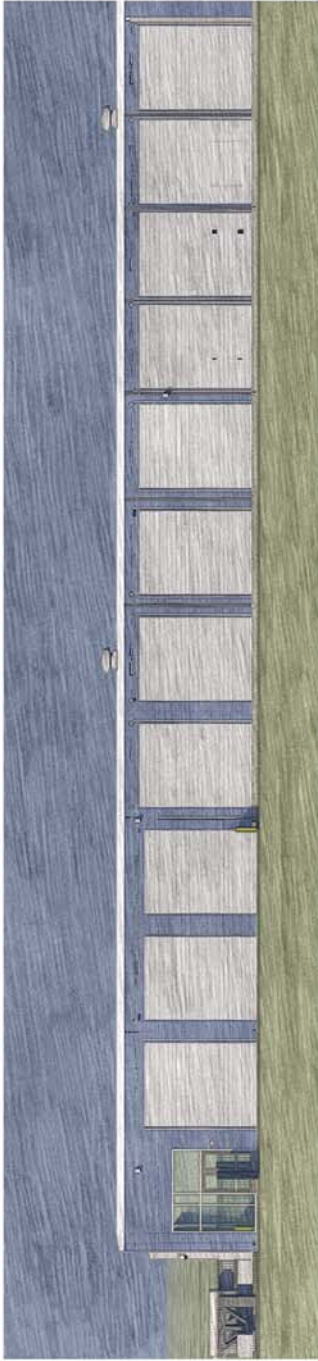
CARES Campus Resource
Building
Washoe County
1775 E. 4TH STREET, RENO, NV

drawing title
Resource Building Elevations
job number
21011
date
10 AUGUST 2022

drawing number
CUP-2



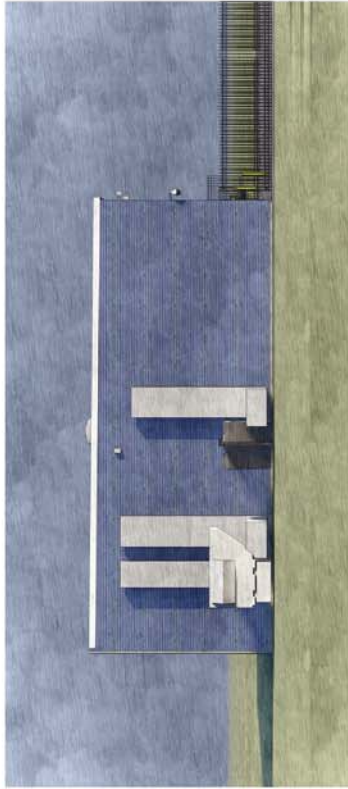
4 North - West End Elevation
1/8" = 1'-0"



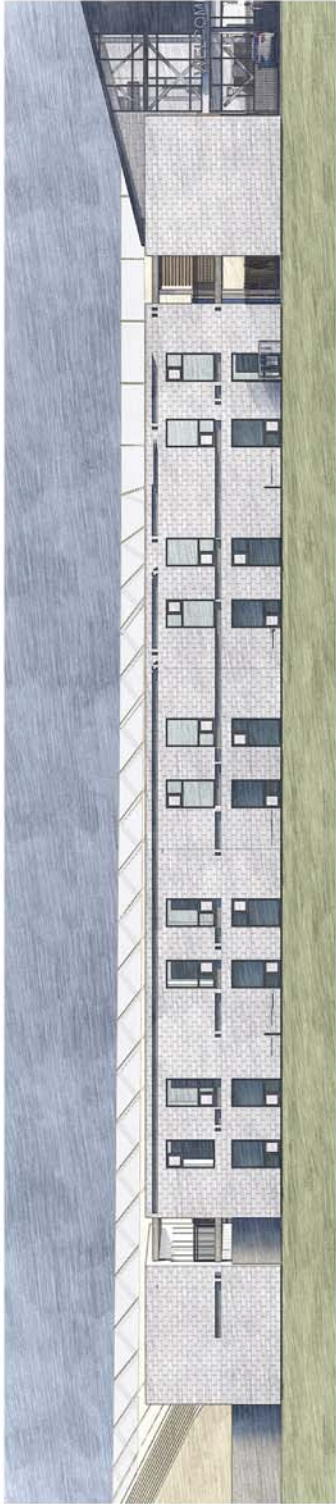
3 North - East End Elevation
1/8" = 1'-0"



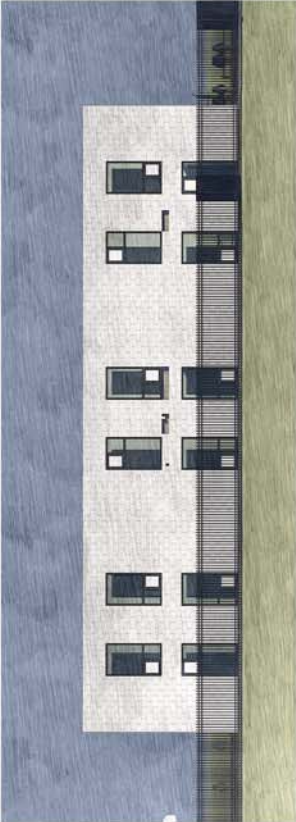
2 West Elevation
1/8" = 1'-0"



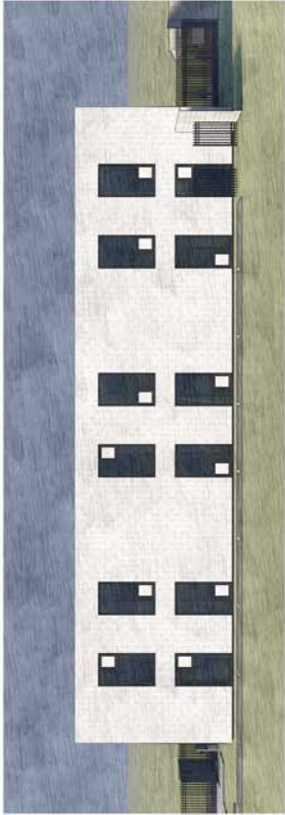
1 East Elevation
1/8" = 1'-0"



④ West Elevation
1/8" = 1'-0"



③ South Elevation
1/8" = 1'-0"



② North Elevation
1/8" = 1'-0"



① East Elevation
1/8" = 1'-0"



#	Date	Description
---	------	-------------

CARES Campus Supportive
Housing
Washoe County
1775 E. 4th Street
Reno, NV 89512

drawing title
SUPPORT HOUSING ELEVATIONS
job number
21011.40
date
18 AUGUST 2022

drawing number
CUP-3